

*think differently*  
**EXPERIENCE  
MORE**  
CONFERENCE AND EVENTS

UNIQUE AND MEMORABLE

YEARS' EXPERIENCE  
65

CORPORATE PACKAGES



# *contents*

|                              |    |
|------------------------------|----|
| <u>A WARM WELCOME</u>        | 5  |
| <u>TEAM BUILDING DAYS</u>    | 6  |
| <u>EXTRAORDINARY EVENTS</u>  | 8  |
| <u>LET THE FUN BEGIN</u>     | 9  |
| <u>CORPORATE FUN DAYS</u>    | 10 |
| <u>MAKE AN IMPACT</u>        | 12 |
| <u>TOWER SUITE</u>           | 14 |
| <u>HAMILTON SUITE</u>        | 16 |
| <u>PARK VIEW SUITE</u>       | 18 |
| <u>OUTDOOR SPACE</u>         | 20 |
| <u>MAKE YOURSELF AT HOME</u> | 22 |
| <u>GLAMPING</u>              | 23 |
| <u>HUNGRY FOR SUCCESS</u>    | 24 |
| <u>ROOM SPECIFICATIONS</u>   | 25 |
| <u>HOW TO FIND US</u>        | 26 |



“

*It was the most relaxing event  
I have ever had to organise!*

It felt like the events team were always two steps ahead and nothing was too much trouble. It's rare to see such genuine hospitality and we thoroughly enjoyed the event from start to finish.

*Signe Langkjaer  
Chiquito*

”

A WARM  
WELCOME

FROM ONE OF THE  
UK'S BEST LOVED  
ATTRACTIONS

*we have 65 years' experience*

## CREATING UNIQUE, MEMORABLE DAYS AND EVENTS FOR EACH AND EVERY GUEST

**Set amongst 280 acres of lakes and parkland,  
Drayton Manor Park and Hotel combines a  
beautiful setting with spacious conference space,  
exciting corporate packages and delicious cuisine.**

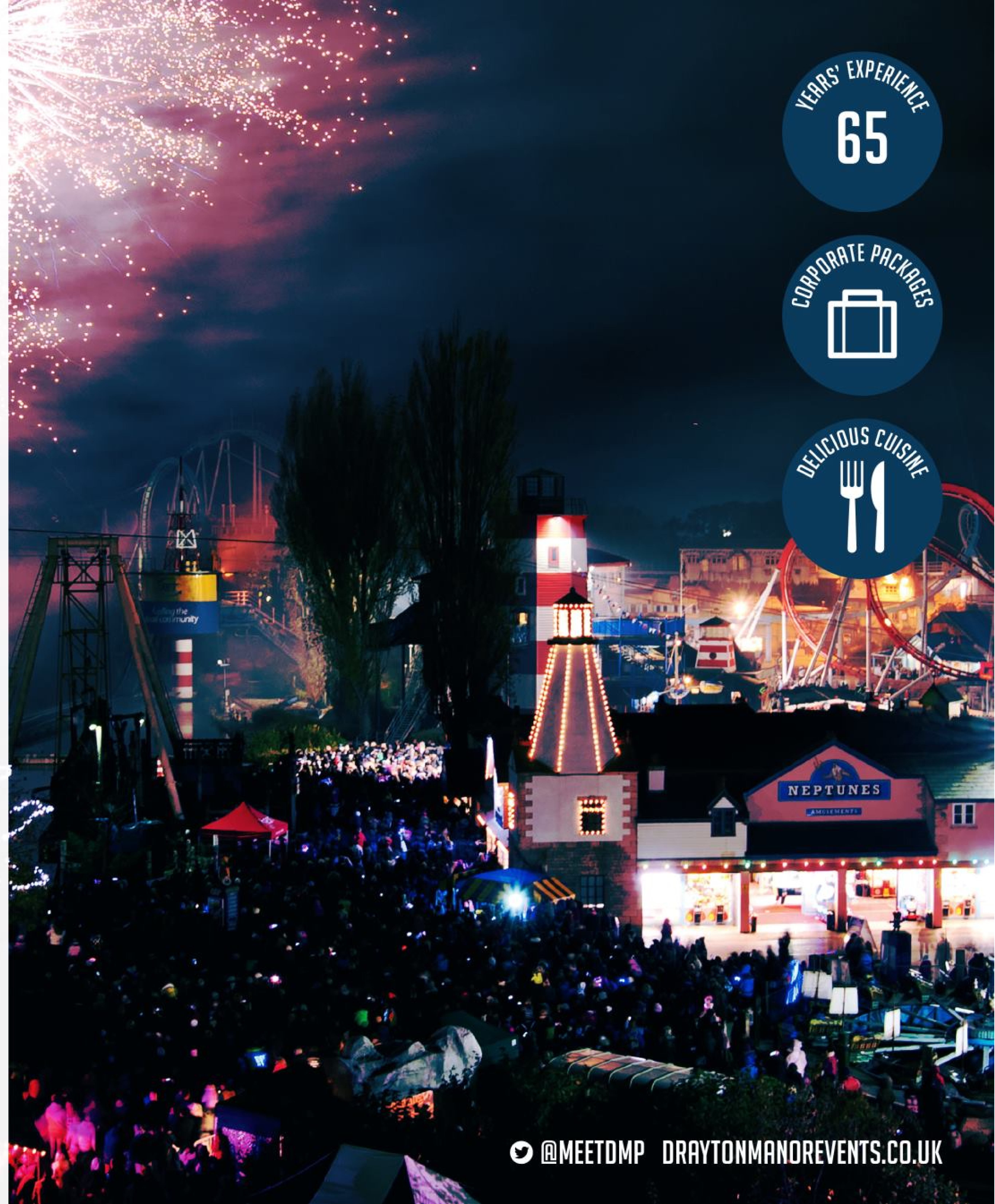
Located under half an hour away from Birmingham, and less than an hour away from Leicester, Derby, Stafford and Coventry - Drayton Manor is the perfect location to connect you with the Midlands' biggest cities.

You will find us just off the M42, with links to the M1, M6 and M40.

YEARS' EXPERIENCE  
65

CORPORATE PACKAGES  


DELICIOUS CUISINE  



*where good teams*

**BECOME  
GREAT**

*our team building days  
are designed to*

## IMPROVE CREATIVITY, BOOST COMMUNICATION AND ULTIMATELY CREATE A MORE ENERGETIC WORKFORCE

Need some inspiration? We offer everything from 'It's a Knockout' arenas and high rope courses, to bush craft survival days and 'Total Wipe Out' style inflatables.

Don't forget to leave time to spend in our theme park, home to some of the most thrilling rides in the world!

If you're feeling competitive, challenge your team members to ride our adrenaline-pumping rides or try our 'Man vs Food' style challenges in our Grill. **But be warned... this is not for the faint hearted!**

TOUGH TIMES  
DON'T LAST

TOUGH  
TEAMS  
DO!



*turn your event into*  
**SOMETHING  
EXTRAORDINARY**

**For the ultimate VIP experience, we can offer you exclusive hire of the entire park.**

Drayton Manor Park features some of the biggest, wettest and scariest rides in the world. You and your guests will exclusively experience over 100 sensational rides and attractions, including:

- Apocalypse, the world's first stand up tower drop
- Shockwave, Europe's only stand up rollercoaster
- Stormforce 10, 'the best water ride in the country' *(Daily Express)*

Your guests will also have private access to the 4D cinema, Drayton Manor Zoo, restaurants and food outlets to suit every taste.

THE ULTIMATE  
**VIP**  
EXPERIENCE

OVER 100  
SENSATIONAL  
RIDES AND ATTRACTIONS

01827 255995 [EVENTS@DRAYTONMANORHOTEL.CO.UK](mailto:EVENTS@DRAYTONMANORHOTEL.CO.UK)





# LET THE FUN BEGIN

Why not end your day at the park with your own firework and laser display over the lakes, or even include a private ice rink for your guests? We could also arrange to fly in your guests by helicopter – whatever your plans, we can make it happen.

We'll take care of every detail, from e-ticketing to ensuring each car is parked on the day. You'll also have a dedicated greeting team on hand to welcome your guests and assist with any requests, no matter how big or small.

**DRAYTON MANOR PARK HOLDS  
15,000 VISITORS. THAT'S THE SAME  
AS 180 DOUBLE DECKER BUSES!**



**x20**





*an excellent way to*

**CELEBRATE  
ACHIEVEMENTS  
THROUGHOUT THE YEAR**

*our Family Fun Days are  
the perfect opportunity for  
teams to*

## **SOCIALISE OUTSIDE THE WORKING ENVIRONMENT OR CELEBRATE KEY ACHIEVEMENTS THROUGHOUT THE YEAR**

**Our events team have many years of experience in organising social functions and exceeding our guest's expectations. We aim to make your Family Fun Day the highlight of your workforce's calendar!**

What's included?

- Theme Park tickets
- Private hospitality suites
- Magic Money
- Retail items
- A private buffet, street food or BBQ lunch
- Complimentary car parking

**Contact our Events Team for more information or to arrange a tour of everything we have to offer.**

**Call 01827 255995**

**Email [events@draytonmanorhotel.co.uk](mailto:events@draytonmanorhotel.co.uk)**





*how we can help you*

**MAKE AN  
IMPACT**

*take advantage of our  
inspiring location and*

## TAILOR YOUR PACKAGE TO INCLUDE ADMISSION TO THE PARK

Whether you need to plan an unforgettable product launch, exhibition or business meeting, we can help you make an impact.

### Boardrooms

Our executive boardrooms are private, quiet spaces which are perfect for interviews, training and strategy meetings.

### Day meeting

Includes arrival, mid-morning and afternoon tea, coffee, biscuits and cakes, as well as a two course buffet or working lunch.

Our day delegate packages can be tailored to include tickets into our theme park - where you'll experience some of our most thrilling rides.

### 24 hour packages

Includes overnight accommodation, full English breakfast, two course lunch, dinner in our Parklands Restaurant and use of all the conference facilities.

FROM  
**BRAIN  
WAVE**

TO  
**SHOCK  
WAVE**





*a dedicated stage area*

**PERFECT FOR  
PRESENTATIONS  
OR ENTERTAINMENT**

**TOWER  
SUITE**

**SPACIOUS  
AND FLEXIBLE**

*a spacious and flexible  
space with options to*

**CREATE SEPARATE EVENT  
AREAS FOR MEETING  
BREAKOUTS, REFRESHMENT  
BREAKS OR EXHIBITIONS**

Meet here for a dedicated stage area perfect for presentations or entertainment, as well as private outdoor space available for al fresco dining.

MAXIMUM CAPACITY  
**500**

DEDICATED STAGE AREA  


AL FRESCO DINING  




*make an event your own*

**WITH OUR MOST  
PRIVATE AND  
INTIMATE SPACE**





*meet here for sophisticated presentations and speeches*

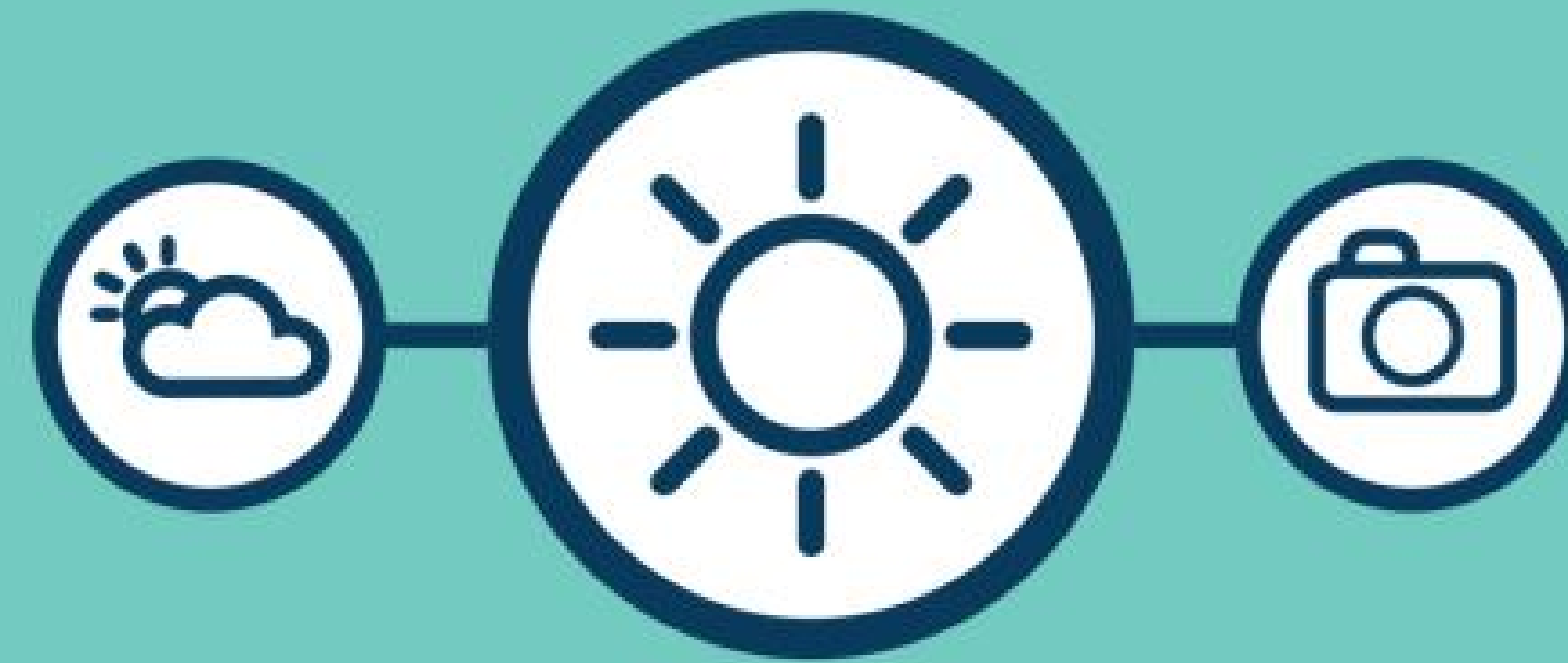
## ALLOWING OUR GUESTS TO MAKE THE EVENT THEIR OWN

Equipped with its own breakout room, The Victoria Lounge, you will enjoy natural daylight and soft furnishings.

The breakout space is ideal for holding separate meetings within a close proximity.

Meet here for sophisticated presentations and speeches, as well as private catering facilities.





*Located within the hotel*  
**FLOOR-TO-CEILING WINDOWS  
WITH INSPIRING  
PARKLAND VIEWS**

PARK VIEW  
SUITE

A CLASSIC  
CONFERENCE  
SPACE

*our classic conference  
space can be divided into  
two separate spaces*

PERFECT FOR INTERVIEWS,  
TRAINING AND  
STRATEGY MEETINGS

Meet here for a modern conference space, with a 42" HD plasma, PA system, projector and screen. This suite includes a soundproof partition wall enabling the room to be divided into two separate spaces.

MAXIMUM CAPACITY  
200

42" HD PLASMA  


SOUNDPROOF PARTITIONING  




*beautiful outdoor space*  
ACCOMMODATING ANYTHING  
FROM MARQUEES TO  
MINI FESTIVALS

*access up to 43,300m<sup>2</sup>  
of outdoor event space*

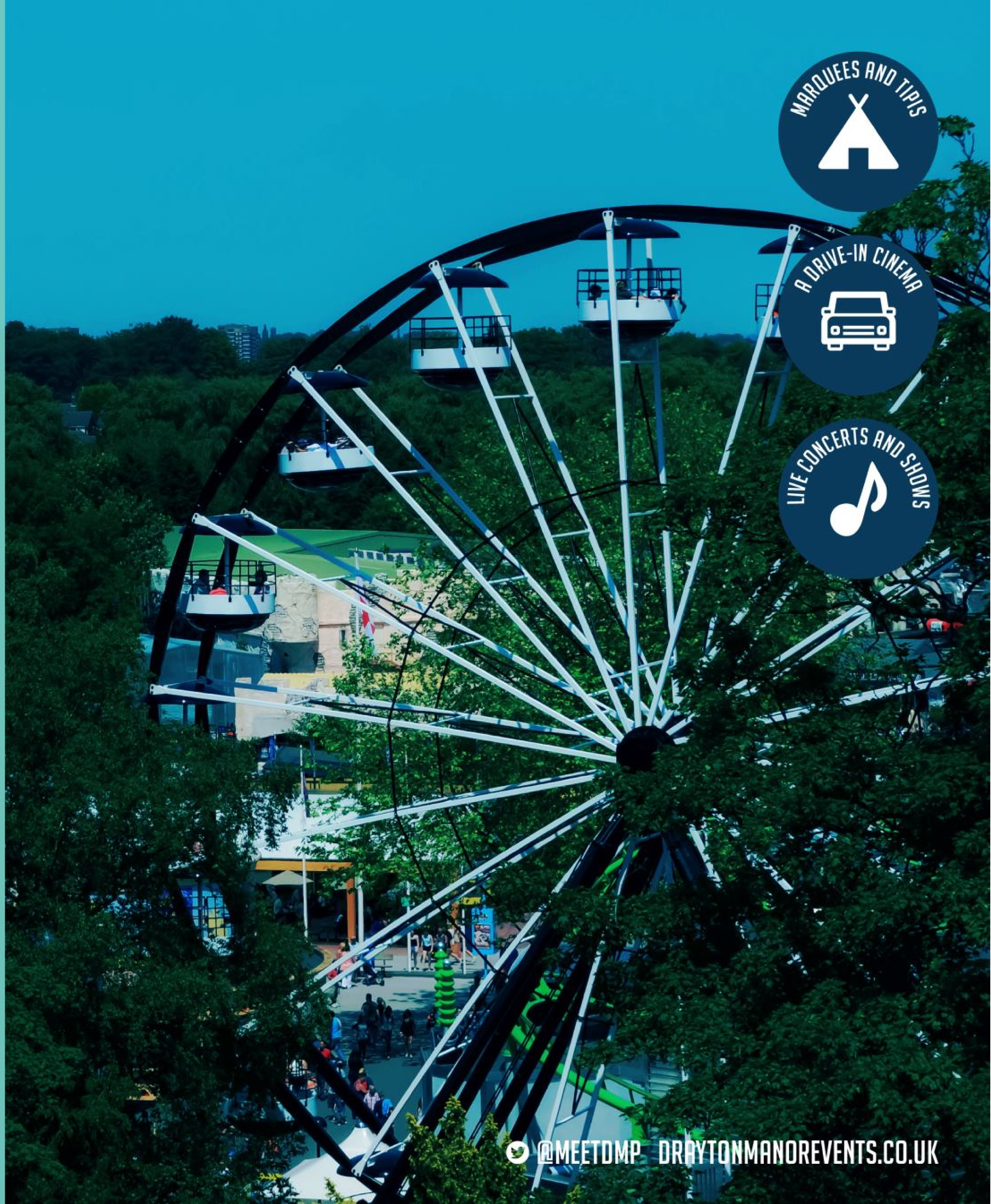
## THE EQUIVALENT OF SIX FOOTBALL PITCHES

Our beautiful outdoor space can accommodate marquees, tipis, a drive-in cinema, live concerts and shows or even mini festivals.

The grounds are the perfect place to enjoy outdoor pursuits, country sports and team building days, or choose something more intimate and hire specific areas for drink receptions and al fresco dining.



x6



*We offer spacious,  
comfortable  
accommodation and*

## A RELAXED ATMOSPHERE TO EACH AND EVERY ONE OF OUR BUSINESS GUESTS

Once the working day is complete, relax in our executive rooms or visit the Carousel Bar or hotel restaurant to unwind. Alternatively, our hotel is also located next to Drayton Park Golf Course which is open to the public.

As a guest at the hotel, you will also enjoy locally sourced food and drink in our Parklands or Grill Inn restaurants. Our restaurant teams are dedicated to serving fresh, seasonal dishes, as well as tempting starters and delicious desserts.

**LET'S  
CONNECT**

**COMPLIMENTARY  
WI-FI THROUGHOUT  
YOUR STAY**

01827 255995 [EVENTS@DRAYTONMANORHOTEL.CO.UK](mailto:EVENTS@DRAYTONMANORHOTEL.CO.UK)



*our glamping tents make*

## A GREAT ALTERNATIVE TO WHAT YOU MAY EXPECT FROM CORPORATE ACCOMMODATION

Each tent has two separate bedrooms, a communal area and private decking - the perfect relaxing environment after a full day with the team.

“

I would thoroughly recommend Drayton Manor Hotel as an alternative to the mainstream options for business stopovers.

*Tripadvisor*

”



*From fine dining to street food and picnic hampers*

## NOTHING BRINGS PEOPLE TOGETHER LIKE GOOD FOOD

We're experienced in catering for glamorous award ceremonies, business lunches, busy team building days and late night events. From fine dining to street food and picnic hampers to themed menus; we can cater to up to 10,000 guests.

As a guest at the hotel, you will also enjoy high quality food and drink in our Parklands or Grill Inn restaurants. Our restaurant teams are dedicated to serving fresh, seasonal dishes, as well as tempting starters and delicious desserts.

### **Hungry for success?**

Get the team together and take part in our culinary masterclasses with our very own Master Chef. From chocolate making to sushi rolling, our masterclasses encourage innovation, creativity and plenty of competitive spirit!

TAKE PART IN A  
**CULINARY  
MASTERCLASS**

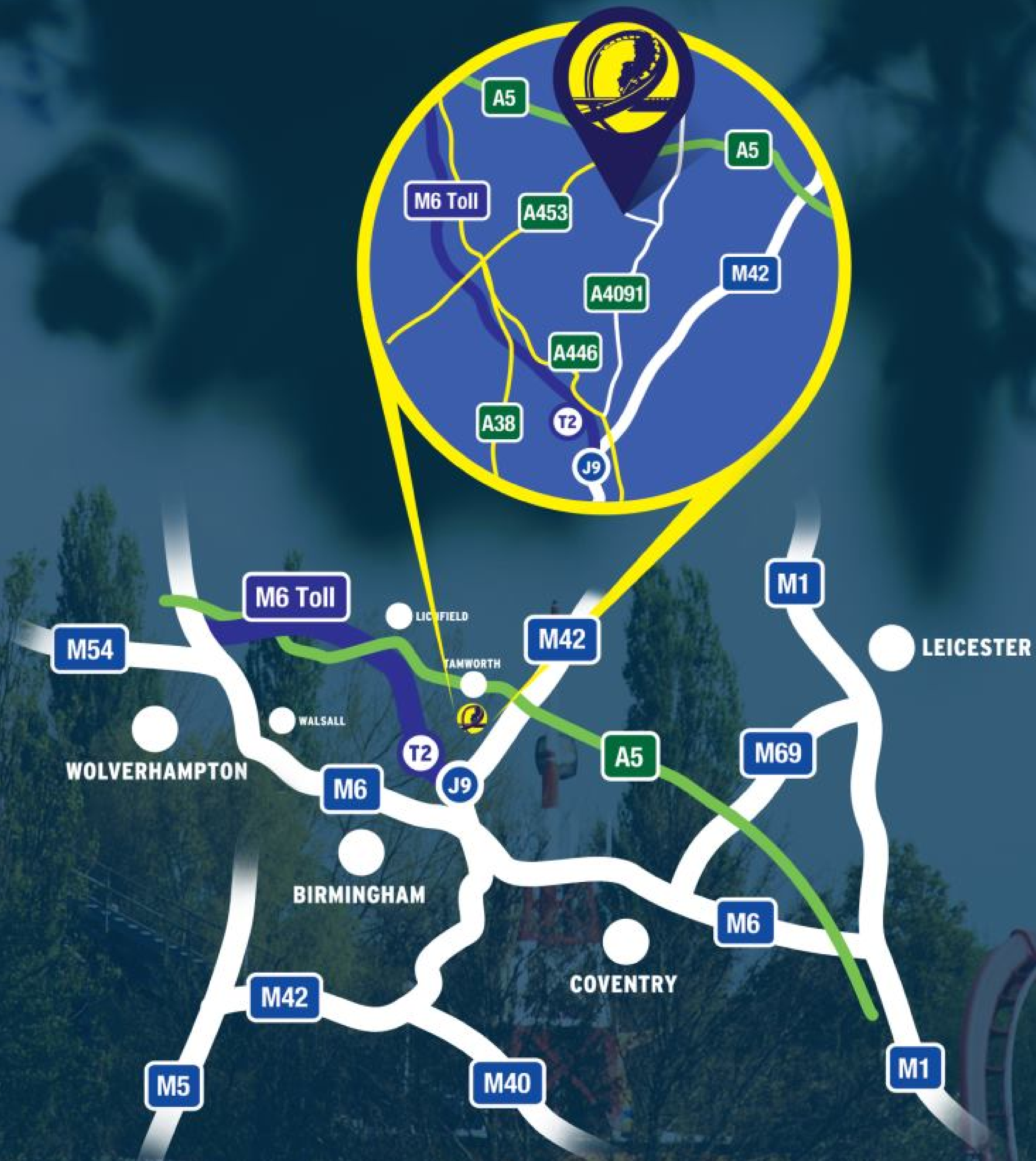
ENCOURAGE  
INNOVATION  
AND CREATIVITY

01827 255995 [EVENTS@DRAYTONMANORHOTEL.CO.UK](mailto:EVENTS@DRAYTONMANORHOTEL.CO.UK)









[DRAYTONMANOREVENTS.CO.UK](http://DRAYTONMANOREVENTS.CO.UK)

01827 255995 [EVENTS@DRAYTONMANORHOTEL.CO.UK](mailto:EVENTS@DRAYTONMANORHOTEL.CO.UK) NR. TAMWORTH, STAFFORDSHIRE B78 3TW